



FIRETRACE™

International

ELECTRICAL ENCLOSURES
Fire Protection Solutions

FIRETRACE, THE PROVEN CHOICE FOR ELECTRICAL ENCLOSURE PROTECTION

THE PROBLEM

Electrical enclosures can be found in virtually every industrial or commercial space.

In some cases the enclosure might be a single or small panel while in others it may involve a large room filled with electrical boxes. Should a fire occur in one of these cabinets, it would typically destroy the contents, but left unchecked the fire could spread to the room or even the building.

Regardless of the number of enclosures, Firetrace offers a reliable cost-effective method to contain and isolate a fire to the enclosure itself. Typical enclosures include:

- ✦ Motor control centers
- ✦ Electrical panels
- ✦ Control closets
- ✦ Wiring harnesses
- ✦ Cable trays
- ✦ Power vaults
- ✦ UPS
- ✦ Transformers

Some of the most common sources of fire in electrical enclosures include:

- ✦ Wire fatigue
- ✦ Improper installation
- ✦ Overloaded circuits
- ✦ Equipment failures
- ✦ Other environment causes

THE FIRETRACE SOLUTION

Because Firetrace takes the fire detection and suppression inside of the hazard, a growing fire can be caught quickly, preventing the spread of fire to other parts of the building that would require firefighters or water sprinklers to extinguish.

By containing the fire to the individual enclosure damage is limited to that enclosure or even the affected component and the collateral damage often caused by traditional fire suppression is avoided.

FIRETRACE ADVANTAGES

-  - Highly reliable in harsh environments – tolerant of dirt, debris and temperature extremes
-  - Requires no electricity offering uninterrupted service 24/7
-  - Sounds alarm and can send an alert to your monitoring system
-  - Eliminates concern for false alarm or false discharge
-  - Provides immediate detection and delivery
-  - Allows for inexpensive installation, maintenance and recharge
-  - Tubing can easily be routed to virtually any location in the cabinet to provide fast, accurate detection



HOW IT WORKS

From localized fire protection for electrical equipment to total flooding fire protection for equipment rooms, Firetrace has a fire suppression system for you.

DIRECT RELEASE SYSTEMS



In Direct release systems, the tubing nearest the hottest point of the fire ruptures, forming an effective discharge “nozzle.” The agent contained in the cylinder is then released in the immediate proximity of the fire.

INDIRECT RELEASE SYSTEMS



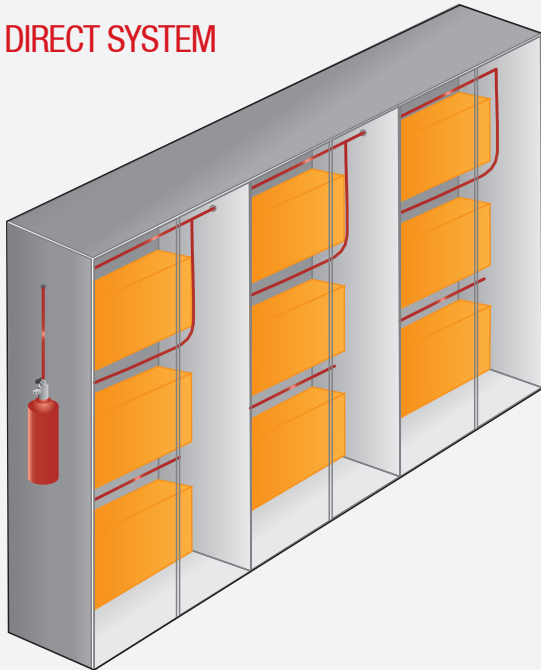
With an Indirect release system, the Firetrace tubing is used only for detection. When a fire causes the tubing to burst, a valve opens and the suppressant is discharged via a traditional distribution network and fixed nozzles.

FIRETRACE DETECTION TUBING

Firetrace Detection Tubing is ideal for fast, reliable detection of heat and flame even in the toughest applications.

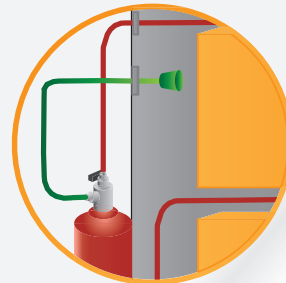


DIRECT SYSTEM



— Firetrace Detection Tubing

INDIRECT SYSTEM



— Firetrace Detection Tubing

— Discharge Piping

— Discharge Nozzle

FIRETRACE E4 TOTAL FLOODING SYSTEM

Firetrace also offers the industry leading E4 Engineered Clean Agent Total Flooding Systems, which are capable of protecting entire rooms. E4 systems take full advantage of 3M™ Novec™ 1230's unique characteristics which allows the use of lower-cost, low pressure equipment while achieving the performance of more costly high-pressure systems. E4 offers increased design flexibility and lower labor, piping and installation costs.

E4 systems can be sized for any room. The systems can be activated either manually or automatically. E4 systems are also available with FM-200 clean fire suppressing agent.





OVER 500 AUTHORIZED FIRETRACE DISTRIBUTORS WORLDWIDE

Providing hazard analysis, quotations, installations, service and support on Firetrace systems, to reliably and effectively protect your assets.

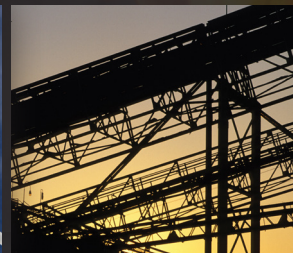
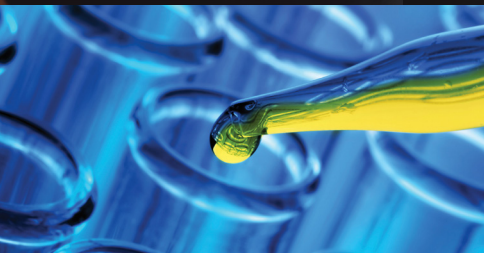
From the adaptable pre-engineered systems using the world-renowned Firetrace Detection Tube to protect critical equipment and enclosures to the innovative new E4 Engineered Systems providing a new level of flexibility in system design, Firetrace leads the world in special hazard protection.

Airports

IT Infrastructure

Mass Transit

Ports and Intermodal Facilities



Mining

Military

Oil & Gas

Wind Energy

Pharmaceuticals

A HALMA COMPANY

www.firetrace.com

Firetrace currently has more than 20 international approvals and listings, including UL, CE, FM, ULC & ISO9001. Approvals and listings vary by system type and agent.



FIRETRACE INTERNATIONAL - WORLD HEADQUARTERS
8435 N. 90th St., Suite 2, Scottsdale, AZ 85258 USA
+1 888 607 1218 (USA & Canada toll free)
+1 480 607 1218 • info@firetrace.com

FIRETRACE USA LLC - MIDDLE EAST BRANCH
Office 2117, Building 7WB, Dubai Airport Freezone
(DAFZA), Dubai, United Arab Emirates
+971 56 7599490 • info@firetrace.com